

imagePRESS V900

REFRESH AND GROW YOUR APPLICATION OFFERING



Canon

KEEPING IT FRESH

Do you want to give your customers more flexibility with their printed output?

But, at the same time, you're looking for more efficiencies within your business?

As a commercial or in-house print service provider (PSP), you want to get the best return on investment from your print equipment.

Every day is fast-paced and demanding. The days of long runs are moving further and further away. You still face the same production bottlenecks, but with even tighter deadlines. Customer requests are getting more and more complex. You're receiving orders for more varied jobs to print on a more diverse range of media – and to include variable data.

You need a reliable solution that you can count on to deliver all day, every day. But deliver output that doesn't compromise on quality and consistency.

Our latest imagePRESS V series, comprising the V900 series, V1000 and V1350 models, helps you do just that. We've taken a fresh look at our imagePRESS technology and with this latest series, set a new standard in cut-sheet toner productivity. The imagePRESS V series is the latest evolution of the hugely successful imagePRESS family.

Featuring progressive technology that takes its performance to a new level, the V series helps you overcome your everyday production challenges and helps you meet those demands for high quality.

Robustly built and with sustainability a key consideration, the series has been engineered for continuous, reliable productivity, consistent, stable colour and class-leading front and back registration accuracy.



For PSPs wanting to print as wide a variety of applications as possible on one compact device, the imagePRESS V900 series will give you ultimate flexibility. It has been designed with ease of use in mind, so you don't need to be a pro to operate the machine. Focus your time elsewhere and show your customers the other ways you can add value for them.

It's time to offer your customers a breath of fresh air and let them see what's possible with today's digital print technology. Banish production headaches. Make life easier for your operators. Maximise your creative and commercial potential. So what are you waiting for?

© Lorenz Holder - Canon Ambassador

TRANSFORMING VARIETY INTO VALUE

A VARIETY OF SPEEDS: MEET TIGHT DEADLINES

The imagePRESS V900 is for light-volume commercial and in-house print service providers.



With a monthly duty cycle of 500,000 A4 pages and a lifetime of 15 million A4 pages, the V900 series comes in three versions and multiple configurations, depending on your needs:

- V900 - maximum speed of 90ppm
- V800 - maximum speed of 80ppm
- V700 - maximum speed of 70ppm

A VARIETY OF OUTPUT: EXPAND YOUR OFFERING

The imagePRESS V900 offers you a class-leading variety of applications printable on one compact device.



Offer your customers even more, thanks to the range of media it supports including:

- From 52gsm plain/70gsm coated paper to 350gsm thick and short card
- Narrow envelopes (90x205mm)
- Auto-duplex 762mm banners and manual duplex 1.3m banners
- Embossed and synthetic paper



A VARIETY OF AUTOMATION FEATURES: DELIVER MORE WITH CONFIDENCE

The imagePRESS V900 has been designed to reduce turnaround time and the skills required to produce high-quality output thanks to:

Multiple time and labour-saving automation features

Reduces the specialised skills needed to operate the technology.

Automated remote and on-device alerts

Informs the operator if consumables are running low, so that unscheduled stops and slowdowns are a thing of the past.

Multi-D.A.T. (Multi-Density Adjustment Technology)

Automatically corrects and delivers consistent and stable colour on every page, without any operator intervention.

Multi-Drawer Paper Deck E1 with the Paper Deck Double-Feeding Detection Kit, which features a multi-feed detection sensor

Meaning you don't need to inspect the printed output for any blank pages. Misfed pages are automatically diverted to the escape tray, preventing paper jams.

In-Line Spectrophotometric Sensor (optional)

Enhances colour reproduction by automatically correcting gradations and creating profiles and verifications.

Sensing Unit (optional)

Automatically monitors registration and colour settings for the job, calibrates the settings before printing and maintains them throughout the print run, saving time and waste, and maintaining productivity.

Duplex Colour Image Reader Unit (optional)

Not only does it make copies and scans, but it can also make pre-print adjustments to front & back registration (delivering a class-leading 0.8mm accuracy), colour gradation, colour density and secondary transfer voltage to ensure high quality even on textured media. Simply run printed adjustment charts through the Automatic Document Feeder (ADF) to automatically make pre-print adjustments without the operator needing any specialised knowledge or skills.

ADDITIONAL VALUE WITH SUSTAINABILITY

The imagePRESS V900 has been designed with the environment as a key consideration, meeting the highest standards of energy efficiency:

- ENERGY STAR certified
- EPEAT Gold from the EPEAT Registry, the global rating system for greener electronics
- Use of induction heating technology, which is notable for its energy efficiency, uniform heat distribution and fast time-to-temperature. This means the toner is fused quickly but without overheating the paper.



© Lorenz Holder - Canon Ambassador

ULTIMATE VERSATILITY A CLASS-LEADER

Is one of your priorities to offer your customers new applications?

Are you looking to invest in a new toner production press that can support a wide range of media types?

Customers need to squeeze maximum productivity and profit from every square metre of the print room.

Media range

The imagePRESS V900 series supports a very broad range of media – from 52gsm plain/70gsm coated paper to 350gsm thick and short card, narrow envelopes (90x205mm), as well as simplex 1.3m banners and embossed and synthetic paper.

A suction fan (which adjusts the suction force according to paper weight) has been added to the transport section before fixing. This stabilises the transport of thick (up to 350gsm) paper.

Transport stability for diverse media options

Added feed rollers and strengthened transport rollers also improve transport stability for thin, thick and short paper, expanding the range of media that can be used and preventing paper jams. So, for example, a set of short greetings cards or invitations and envelopes can be produced on the same device. What's more, coated paper as light as 70gsm can also now be supported.

This level of media support makes the V900 a class leader in terms of the variety of applications printable on one compact device – only 1.47m wide in its smallest configuration.

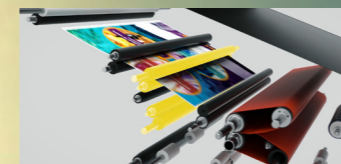


RELIABLE PRODUCTIVITY FROM START TO FINISH

Poor productivity can cost you jobs and – potentially – customers.

With a monthly duty cycle of 500,000 A4 pages, the imagePRESS V900 series comes in three versions, the V900, V800 and V700, which print at respective maximum speeds of 90ppm, 80ppm and 70ppm.

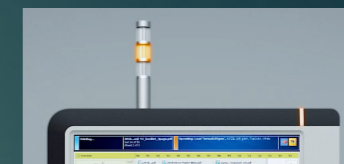
Productivity is enhanced thanks to:



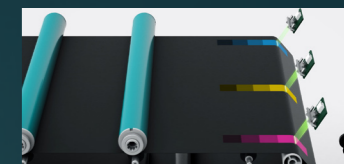
Rated speed on media up to 256gsm



Media and toner can be changed while the press is running for maximum uptime



Remote alerts when consumables are running low help to keep things moving, with no unscheduled stops or slowdowns



Multi-D.A.T. corrects and delivers consistent and stable colour on every page, irrespective of the print job length and without any operator intervention

However, being productive is no longer just about feeds and speeds - it's about every stage in the sheet's journey through the printer. Just identifying and automating workflows for the most common job types can deliver impressive initial results. And quality finishing adds impact to print, and even more value to your business.

The V900 can be configured with many options, from the standard to the full configuration and everything in between, so you can tailor the features of your production set-up entirely to your business needs.

More media options means more application choices

Expand your offering and provide customers with even more choice than ever before, such as:

- Brochures
- Banner-sized leaflets with parallel folding
- Card holders with membership cards
- Business cards
- Banners
- Design proofs
- Direct mailers
- Packaging
- Posters
- POS
- Flyers



Manage more

- Use EFI Fiery (embedded or external) or PRISMAsync controllers to manage every incoming job from pre-press to production, to help with steps such as file reception, pre-flighting and data conversion.
- Save hours of administrative time by automating back-office functions. Doing so will mean a seamless operation, so you can spend more time offering consultative value to your customers.

Input more

- To handle bigger volumes, add the Multi-Drawer Paper Deck E1 with the Paper Deck Double-Feeding Detection Kit so if two or more sheets accidentally leave the tray at the same time, it will automatically divert them to the escape tray. This ensures no disruption to productivity and, thanks to the multi-feed detection sensor, there's no need to inspect printed output for blank pages.
- With the multi-drawer deck and POD Deck Light XL, as well as the MP tray feeding, you can have a maximum stacking capacity of 10,400 sheets and save time feeding long-sheets into the printer.

Output more

- Automate production with the optional Sensing Unit and a range of in-line finishing solutions and produce creative, innovative print applications more quickly and cost-effectively.

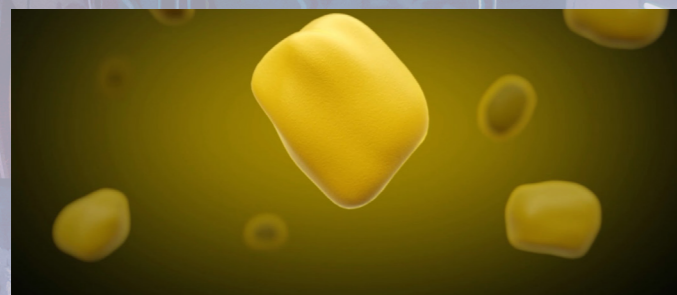
TAKING THE PAIN OUT OF

Quality is critical, but so is time, so the less the operator spends checking that the sheets are to spec, the better.

While high print quality is a given for the imagePRESS V900 series, you can also expect that quality will be maintained from the first to the last sheet of every job, whatever the run length. Feel confident that it will hit the mark without the need for constant supervision from a skilled operator.

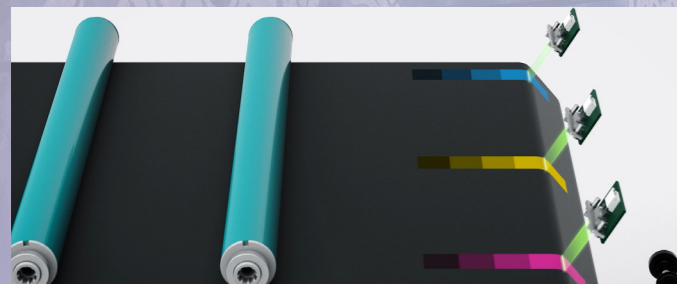
Standard features in the V900 and optional technology ensure this happens.

WHAT COMES AS STANDARD



CV (Consistently Vivid) toner

Delivers consistent, precise and vivid imaging quality, supporting high productivity.



Multi-D.A.T. (Multi-Density Adjustment Technology)

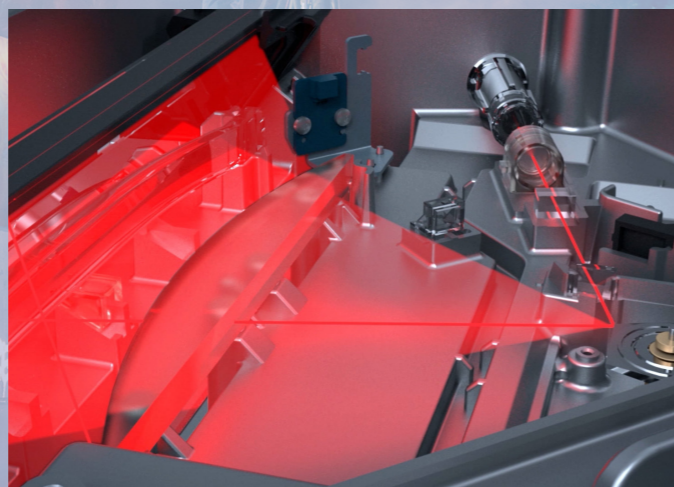
Automatically corrects and delivers consistent and stable colour on every page, irrespective of the print job length and without any operator intervention.

Multi-Laser Exposure Technology

Images every dot twice to capture the best definition of each image and creates a high-definition latent image on the drum.

Multiple screen patterns

Delivered by the R-VCSEL technology during imaging, with 190 dot the default for vector elements and 230 dot the default for text.



R-VCSEL (Red Vertical Cavity Surface Emitting Laser)

The world's first laser scanner to fire 32 red beams simultaneously, provides a smaller spot diameter and achieves a resolution of 2,400 x 2,400dpi for high-definition output.

THE CHOICE IS YOURS

At Canon, we offer a market-leading portfolio of powerful solutions to meet every requirement.

You can adapt the V900 to your requirements so you can be confident to deliver on all of your customers' needs.



Basic configuration

Suitable for customers with limited floor space who want to print applications such as envelopes and banners on media between 52 and 350gsm.

QUALITY CONTROL

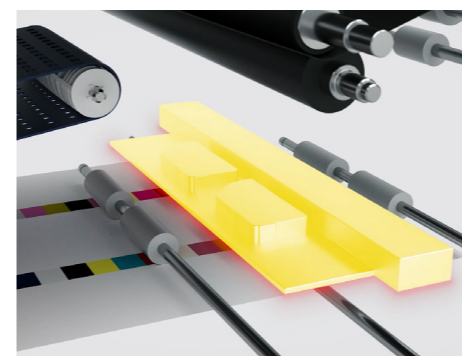
OPTIONAL EXTRAS

Duplex Colour Image Reader Unit

This feature allows you to simply run printed adjustment charts through the ADF to automatically make the required pre-print adjustments without the operator needing any specialised knowledge or skills.

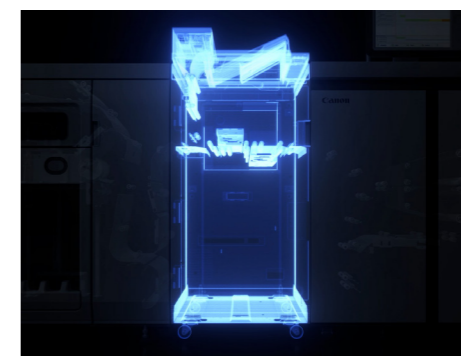
Thanks to the Image Reader Unit, the V900 makes pre-print adjustments to:

1. Front & back registration (previously adjusted on pressing plate) has highest accuracy in its class (0.8mm) and has been improved by sensing the temperature change around the transfer mechanism and keeping the transfer timing constant.
2. Gradation correction (previously adjusted on pressing plate).



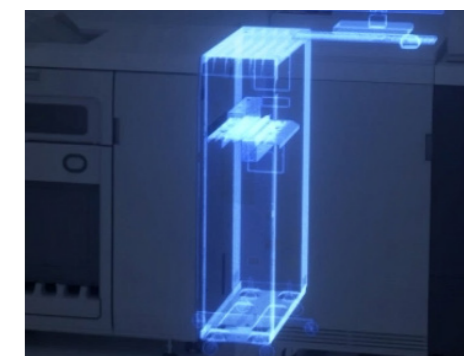
In-Line Spectrophotometric Sensor

Pre-print adjustments can be made even quicker by including this sensor, which enhances colour reproduction by automatically correcting gradations and creating profiles and verifications.



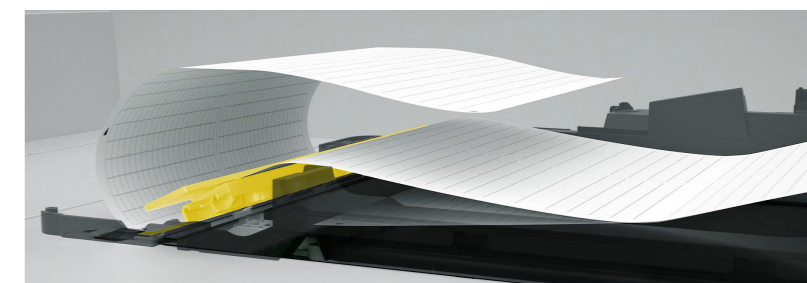
Sensing Unit

This automatically monitors registration and colour settings for the job, calibrates the settings before printing and maintains them throughout the print run, saving time and waste, and maintaining productivity.



Inspection Unit

Automatically spots stains and streaks (down to as small as 0.2mm). Imperfect pages can be marked or removed, or removed and reprinted. Mistakes in variable data work can cause enormous damage. The inspection unit ensures this won't happen by checking alphanumeric data, QR codes and barcodes.



3. Density unevenness (previously adjusted with a colorimeter).
4. Secondary transfer voltage (previously adjusted manually) to ensure maximum coverage even on textured media.

Canon Ascent Programme

Want to understand more about how the imagePRESS V900 series can help you grow your business?

The Canon Ascent Programme gives you valuable market guidance to inspire you and encourage innovation in your business planning.

Speak with our mentors to find out how you can increase your print volumes and secure the long-term future of your business.

Interested in the imagePRESS V900 series and want to see a demo?

Contact your local Account Manager today.



Full configuration

For customers who want to run various media types simultaneously and need additional paper input and output options to increase application and automation capabilities.

Canon Inc.
Canon.com

Canon Europe
canon-europe.com

Canon Europe Ltd
4 Roundwood Avenue
Stockley Park
Uxbridge
UB11 1AF UK

 /Canon

 /Canon

 /CanonBusinessUK

© Canon Europa N.V. 2022

Canon
